



## **High-Efficiency Air Cleaner Contractor's Installation Instructions, Homeowner's Maintenance Instructions and 10-Year Warranty**

**WARNING:** This product must be installed by a qualified heating and air conditioning contractor.

### **Congratulations**

...on your purchase of a Skuttle High-Efficiency Air Cleaner—one of the finest residential air filtration systems made.

### **Experience that Works for You**

Skuttle has been manufacturing residential indoor air quality products since 1917, earning widespread acclaim as an industry leader. Our longevity and dedication to our customers have resulted in efficient, high-quality products which are easy to use and easy to maintain.

### **Maximum Enjoyment of Your Air Cleaner System**

**Please take a few minutes to read this manual.** It will:

- familiarize you with the many features and benefits of your new Air Cleaner system;
- help you appreciate the need for minimal, regular maintenance to ensure extended years of efficient operation.

**If, at some point, you need parts or service to maintain the superior performance of your Skuttle Air Cleaner, follow these procedures:**

- Contact the heating and air-conditioning contractor who installed your unit. (Often, this information can be found on a label attached to your Air Cleaner or heating system.)
- If no label is found, look in the printed or online Yellow Pages under "Heating & Air Conditioning Contractors".
- If these attempts to obtain parts or service are unsuccessful, contact:

**Skuttle Indoor Air Quality Products**

101 Margaret Street, Marietta, OH 45750

Phone: 800-848-9786 • Fax: 740-373-9565

Email: [customerservice@skuttle.com](mailto:customerservice@skuttle.com) • Web: [www.skuttle.com](http://www.skuttle.com)

### **Principle of Operation**

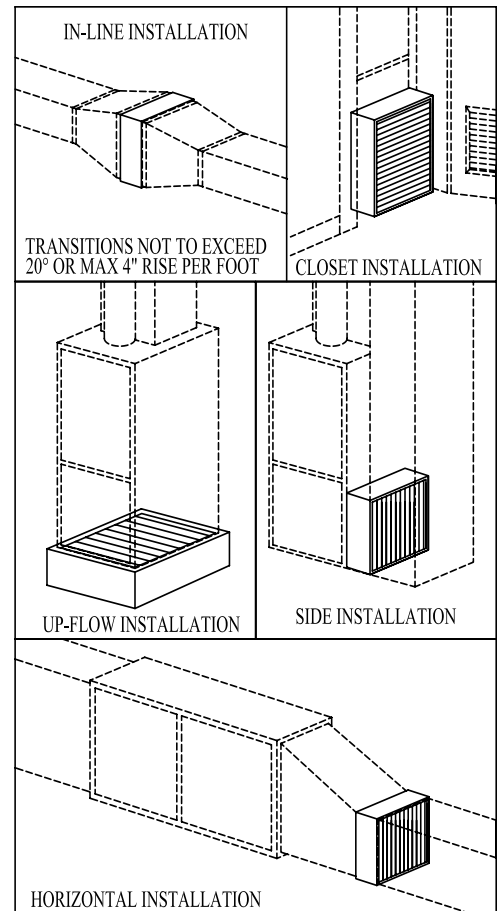
Unfiltered air enters through the return air duct of your home's HVAC system, carrying dust, pollen and other pollutants. The vast majority of these contaminants are filtered out as the air passes through Skuttle's highly-efficient Air Cleaner media. The deep-pleated design serves two purposes: 1) it minimizes airflow resistance by providing an expanded area for accumulation, and 2) it allows for a longer collection period than standard flat-media filters.

## Selecting a Location for Installation

Use the drawings (right) to determine which installation configuration most resembles your situation. The Skuttle Air Cleaner can be installed horizontally, vertically or at an angle to suit your specific requirements. However, keep in mind that **the media must be removed for replacement, requiring adequate clearance space in front of the unit.** (See Product Specifications.)

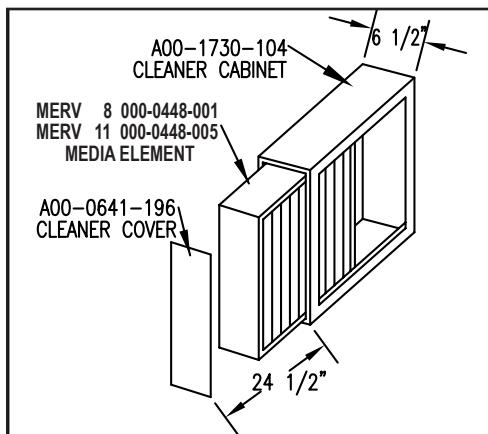
### WARNINGS:

1. **Disconnect electrical power to the system before installing the Air Cleaner.** Electrical shock may cause serious injury or death.
2. **Use care when handling and cutting ductwork.** Sharp edges may cause serious injury.
3. **Do not cut or drill into air conditioning or electrical accessories.** Electrocuting is possible if you come in contact with a live electrical wire; blindness can occur if refrigerant gas contacts your eyes.
4. **When installing a filtering system in conjunction with ultra-violet sterilizing equipment, consult the UV equipment manufacturer regarding the product's capabilities. Consider installing deflectors to protect the filter materials from UV light exposure.**



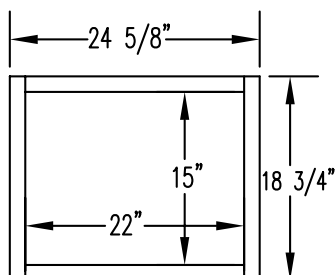
## Product Specifications

### Model DB-25-16 Air Cleaner



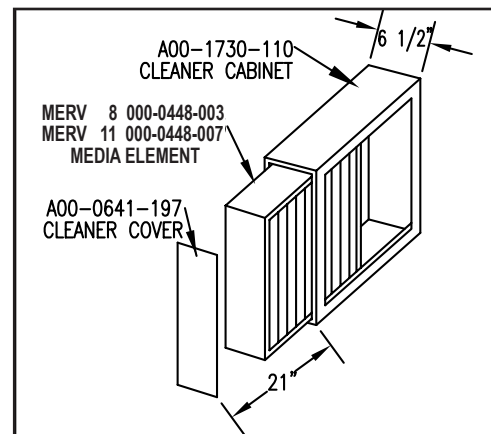
CAPACITY 600-1200 CFM  
SERVICE LIFE 12 MONTHS  
NOMINAL

RESISTANCE @ CFM	INCHES W. G.
600	.06
800	.11
1000	.16
1200	.21



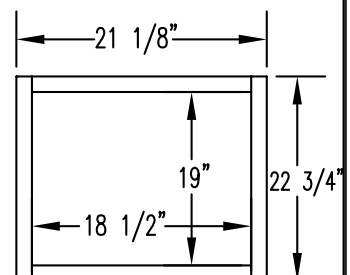
MEDIA SIZE 15 3/4" H X 24 1/4" W X 4 7/8" D

### Model DB-20-20 Air Cleaner



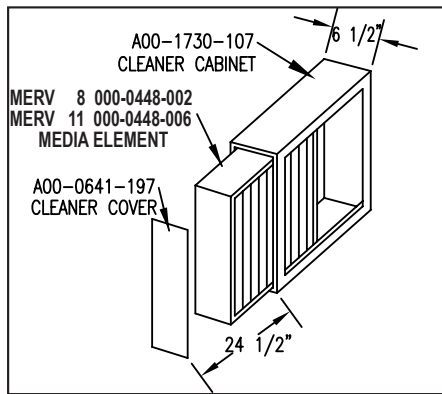
CAPACITY 600-1200 CFM  
SERVICE LIFE 12 MONTHS  
NOMINAL

RESISTANCE @ CFM	INCHES W. G.
600	.06
800	.11
1000	.16
1200	.21



MEDIA SIZE 19 3/4" H X 20 3/4" W X 4 7/8" D

### Model DB-25-20 Air Cleaner



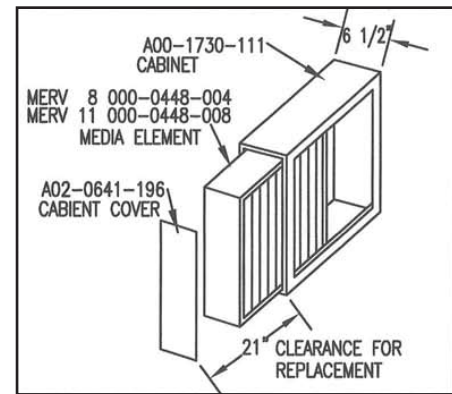
CAPACITY 800-2000 CFM	
SERVICE LIFE 12 MONTHS	
NOMINAL	
RESISTANCE @ CFM	INCHES W. G.
800	.075
1000	.095
1200	.115
1400	.140
1600	.167
1800	.200
2000	.240

24 5/8"	19"	22 3/4"
22"		

MEDIA SIZE 19 3/4" H X 24 1/4" W X 4 7/8" D

### Model D-20-16 Air Cleaner



CAPACITY 600-1200 CFM  
SERVICE LIFE 12 MONTHS  
NOMINAL

MERV

8

11

RESISTANCE @ CFM	INCHES W. G.	INCHES W. G.
600	.06	
800	.11	
1000	.16	
1200	.21	

Diagram of a rectangular air filter with dimensions: 21 1/8" width, 18 3/4" height, 18 1/2" internal width, and 15" internal height. A diagonal line is shown in the bottom right corner.

MEDIA SIZE 15 3/4" H X 20 3/4" W X 4 7/8" D

## Installation

The Air Cleaner cabinet can be installed on ductwork using standard sheet metal screws up to 1" long.

- Remove the cover and pull the media element out by grasping it at the top and bottom.
- Install the cabinet in the cold air return duct, so that air flowing through the duct also will flow through the Air Cleaner.
- Attach the Air Cleaner to the ductwork; tape and seal all seams air tight.
- Reinstall the media element with the arrow pointing in the direction of the airflow; reinstall the cover.

## Special Considerations

### Transitions

Transitions, when needed, should be constructed so that the angle of expansion is no more than 20° (a maximum of 4" rise per foot.)

### Turning Vanes

To reduce turbulence, turning vanes are recommended if the installation requires a 90° elbow, or if there is an angled fitting directly beside the Air Cleaner.

### Humidifiers

It is crucial to avoid the buildup of moisture in and around the Air Cleaner media during humidifier operation. Evaporative type humidifiers will not effect the media. Spray or steam units should be installed in the air stream *after* the Air Cleaner. (If it is necessary to install a spray or steam humidifier that is in line *before* the Air Cleaner, there must be 8 feet or more of ductwork between the humidifier and the Air Cleaner.

## Maintenance

Replacement of the Air Cleaner's pleated media element (i.e., the filter itself) can be determined by periodic visual inspection. The average lifespan of a media cartridge is six months for heating and cooling systems, twelve months for heating-only systems. Actual times vary depending upon system run times, and the amount and type of contaminants present. (You may want to have your HVAC contractor replace the media during the semiannual or annual inspection of your furnace.)

## Installation Using Pre-Punched Holes



Skuttle's pre-punched holes make installation of the Air Cleaner cabinet faster and easier.



**NOTE:** The Air Cleaner cabinet can be installed in any direction because the door (not shown) is reversible.

## **Limited Ten-Year Product Warranty**

This limited ten-year warranty covers this Skuttle Air Cleaner's cabinet and cover assemblies, excluding the replaceable element contained within the cabinet and installation.

Skuttle Mfg. Co. (DBA Skuttle Indoor Air Quality Products) warrants that this product is free from defects in material and workmanship under normal, noncommercial use and service.

Skuttle will remedy any such defects if they appear within 120 months from the date of the original installation, as evidenced by receipt of the warranty registration card, subject to the terms and conditions of this limited ten-year warranty, stated below:

1. THIS LIMITED TEN-YEAR WARRANTY IS GUARANTEED BY SKUTTLE MFG. CO., 101 Margaret Street, Marietta, Ohio 45750.
2. This warranty shall extend only to any noncommercial owner who has purchased this residential product other than for purposes of resale.
3. The completion and return of the warranty registration card is a condition precedent to warranty coverage and performance. Warranty is not valid unless this card is completed and mailed to the factory within fifteen (15) days of equipment installation.
4. All components are covered by this limited warranty, except expendable items.
5. If, within the warranty period, this product or any component requires service, it must be performed by a competent heating and/or plumbing contractor (preferably the installing contractor). Skuttle will not pay shipping charges or labor charges to remove or replace such defective parts or components. If the part of component is found by inspection to contain such defective material and/or workmanship, it either will be repaired or exchanged, free of charge, at Skuttle's option, and returned freight collect.
6. In order to obtain the benefits of this limited ten-year warranty, the owner must notify the dealer or distributor in writing of any defects within thirty (30) days of the discovery. If, after reasonable time, you have not received a satisfactory response, notify in writing: **Skuttle Mfg. Co., 101 Margaret Street, Marietta, OH 45750.**

### **SKUTTLE WILL RECEIVE, FREIGHT PREPAID, ONLY REMOVABLE PARTS OR COMPONENTS OF SUCH DEFECTIVE PRODUCTS.**

7. This limited warranty does not apply to any parts or components that are damaged in transit or handling, have been subjected to abuse, neglect or accident; have not been installed, operated and serviced according to Skuttle's instructions; have been operated beyond the factory-rated capacity; or have been altered in any such way that their performance is affected. There is no warranty due to neglect, alteration or ordinary wear and tear. Skuttle's liability is limited to replacement of defective parts and components, and does not include the payment of the cost of labor charges to remove or replace such defective components or parts.
8. Skuttle will not be responsible for loss of use of any product: loss of time, inconvenience or any other indirect, incidental or consequential damages with respect to person or property, whether as a result of breach of contract, neglect or otherwise. SOME STATES DO NOT ALLOW THE EXCLUSION OR LIMITATION OF EXCLUSION, SO THE PRECEDING SENTENCE MAY NOT APPLY TO YOU.
9. THIS WARRANTY GIVES YOU SPECIFIC RIGHTS, AND YOU MAY ALSO HAVE OTHER RIGHTS WHICH VARY FROM STATE TO STATE.
10. Any warranty work will be performed within a reasonable time—usually within one-hundred-twenty (120) days after notice of defect and delivery to the Skuttle factory, subject to delays beyond the manufacturer's control.
11. Any warranty by Skuttle of merchantability, fitness for use of any other warranty (expressed, implied or statutory), representation or guarantee other than what is set forth herein, shall expire at the expiration date of this limited warranty. SOME STATES DO NOT ALLOW LIMITATION OF HOW LONG AN IMPLIED WARRANTY LASTS, SO THE LIMITATION IN THE PRECEDING SENTENCE MAY NOT APPLY TO YOU.
12. Skuttle reserves the right to make changes in the design and material of its products without incurring any obligation to incorporate such changes in the units completed on or before the effective date of change.

**SKUTTLE MFG. CO.**

**101 Margaret Street, Marietta, OH 45750 • Phone: 800-848-9786 • Email: [customerservice@skuttle.com](mailto:customerservice@skuttle.com)**



# SKUTTLE

## Indoor Air Quality Products



### Humidification

Skuttle makes Residential Humidifiers to fit more floor plans, heating systems and water types than any other manufacturer.



### Filtration

Skuttle High-Capacity Air Cleaners provide whole-house air filtration to make homes cleaner, healthier and more pleasant.



### Ventilation

Skuttle Make-Up Air Controls bring the freshness of the outdoors indoors to help guard against “sick house” syndrome.

For more information, visit us online at [www.skuttle.com](http://www.skuttle.com), or contact us to request our  
*Consumer Awareness Bulletin*

**Skuttle Indoor Air Quality Products**

101 Margaret Street • Marietta, OH 45750

Phone: 800-848-9786 • Fax: 740-373-9565 • Email: [customerservice@skuttle.com](mailto:customerservice@skuttle.com)