

Specifications:

Characteristic	Value
Input voltage	24 VAC
Input current	100 ma AC
Driving power	5A @ 24 VDC
Controller type	Digital micro controller 4 MHZ
Controller's working temperature	-40 °C to + 125 °C
Control humidity range	20% to 70%
Control temperature range	-23 °C to 16 °C
Humidity sensor	Polymer type
Temperature sensor	NTC Thermistor 10Kohm @ 25 °C +/- 1%
Control potentiometer	Slide linear carbon type
Size PCB	2.5 x 3.8 inches

Troubleshooting Table

If any problem or malfunction is detected, please check the following points before calling for service:

Problem	Probable Cause	Solution
Low humidity	Dial set too low	Increase dial 1 step
	No water supply	Check water supply
	Dial in OFF mode	Set dial between 1 and 7
	No power to Compustat	Restore power
	Unit is not working	Try TEST mode
	Unknown cause	Call service
Condensation on windows	High humidity setting	Decrease dial 1 step
	Unknown cause	Call service



Compustat™

OPERATING INSTRUCTIONS

With Compustat, you can control your humidifier almost effortlessly, because:

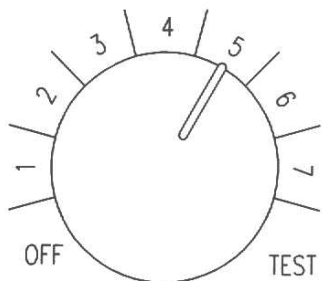
1. Once the knob has been set, Compustat automatically adjusts the indoor relative humidity, based on the outdoor temperature and your desired humidity level.
2. Compustat calculates the optimal humidity so you don't have the problems associated with indoor condensation.
3. Compustat—with its temperature compensation capability—automatically turns itself on in cold weather, off in warm weather.
4. Compustat's humidity and temperature sensors are solid-state, which means there are no mechanical parts, and no problems associated with dust.

The Compustat works in either of two modes: Automatic and Manual....



101 Margaret St., Marietta, OH 45750
740-373-9169 or 800-848-9786 Fax: 740-373-9565
E-mail: customerservice@skuttle.com
www.skuttle.com

Automatic Operation



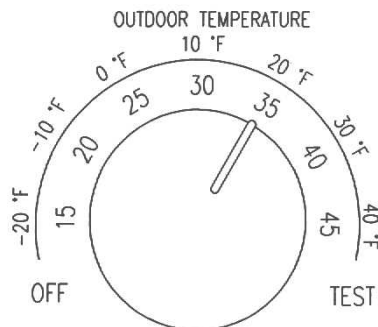
Once your Compustat is installed in the cold air return and internally set to AUTOMATIC, turn the dial to **5** (the standard humidity comfort setting).

Allow the humidity to stabilize for at least two days. (Your home size, furnace efficiency and personal comfort preference may affect the length of time necessary.) At that point, you may reset the dial to **6** for more humidity, or **4** for less humidity. Continue adjusting the dial until you reach your optimal indoor humidity level. **LEAVE THE DIAL IN THIS POSITION.**

Remember that in AUTO mode, the dial is not showing relative humidity, but your preferred humidity setting, based on the following table:

Outdoor Temperature ° F		-10	0	10	20	30	40
Dial Position	1	10%	10%	10%	15%	20%	25%
	2	10%	10%	15%	20%	25%	30%
	3	10%	15%	20%	25%	30%	35%
	4	15%	20%	25	30	35	40
	5	20	25	30%	35%	40%	45%
	6	25%	30%	35%	40%	45%	45%
	7	30%	35%	40%	45%	45%	45%

Manual Operation



For MANUAL operation, apply the manual mode decal to the Compustat faceplate.

Once the unit is installed in the cold air return and internally set to MANUAL, turn the dial to the expected outdoor temperature. The corresponding optimal humidity level has been calibrated for you. For example, by setting the dial to an anticipated 20°F, Compustat automatically maintains the indoor relative humidity in the safe, comfortable 35 percent range (see table below).

Recommended Relative Humidity

Outside temperature	Recommended RH
+40° F	45%
+30° F	40%
+20° F	35%
+10° F	30%
0° F	25%
-10° F	20%
- 20° F	15%

NOTE: In extreme cold weather, relative humidity (RH) must be reduced to prevent condensation on windows and interior surfaces. Otherwise, the excess moisture will eventually cause damage to your home.

Additional Features

Compustat includes other features to help provide wintertime comfort, healthfulness and peace of mind....

Safety Features

Automatic Operation – When the outdoor temperature exceeds 50°F (10°C), Compustat will function in TEST mode only (see below).

Automatic and Manual Operation – When indoor relative humidity exceeds 45%, Compustat will not operate.

Test Mode

You can choose to run a manual test by turning Compustat's dial to the far right (U). The unit will energize the internal relay for one minute, allowing you to make sure everything is functioning correctly.

Manual Off

In MANUAL mode, turn Compustat off during the warm months of the year by turning the dial to the far left (U). (**NOTE:** This is not necessary in AUTOMATIC mode.)